

# DIRECTV

## DON'T COMPROMISE. GET DIRECTV.

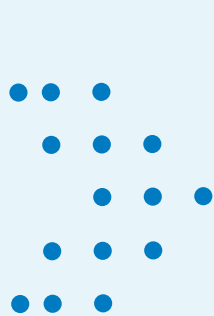


INTRODUCING

gemini



**CHOICE™ PACKAGE**  
2-YEAR LOW PRICE GUARANTEE

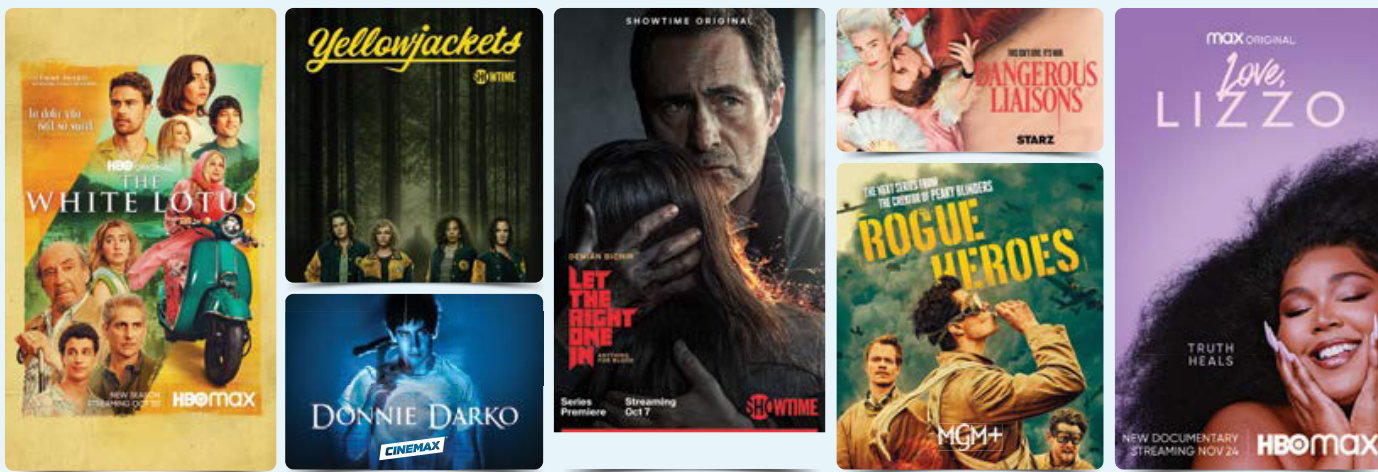


**\$84.99\***  
**MO.**

for 24 months  
+ taxes and fees

**Via Satellite** requires 24-mo. agmt., AutoPay, and Paperless Bill. Advanced Receiver Service Fee \$15/mo. and Regional Sports Fee up to \$13.99/mo. are extra and apply.

**GET DIRECTV AND GET THE FIRST 3 MONTHS**  
OF HBO MAX™, CINEMAX®, SHOWTIME®, STARZ®, MGM+™ INCLUDED



All selected channels auto-renew after 3 months at then prevailing rates (currently \$14.99/mo. for HBO Max, \$11/mo. each for Cinemax, SHOWTIME and STARZ and \$6/mo. for MGM+), unless you call to change or cancel. Req's you to select offers. Offer subject to change & may be modified or discontinued at any time without notice. Access HBO Max only through HBO Max app or hbomax.com.

**Contact your local DIRECTV dealer!**

# 833-637-7409



**\*DIRECTV APP: Available only in the US. (excl Puerto Rico and U.S.V.I.).** Req's compatible device and data connection; data charges may apply. Not all channels available to stream. Limited to up to 5 concurrent streams. Restr's apply. Visit [directv.com/app](https://directv.com/app) for more information. Some offers may not be available through all channels and in select areas. All offers, packages, programming, promotions, features, terms, restrictions & conditions and all prices and fees not included in price guarantee are subject to change or discontinuation without notice. **VIA SATELLITE: Pricing: \$84.99/mo. for two years. After 2 years, then month to month at then current prevailing prices unless cancelled.** **Additional Fees & Taxes:** \$7/mo. for each additional TV connection on your account. Wireless upgrade with HD DVR \$99.00. Applicable use tax expense surcharge on retail value of installation, custom installation charges, equipment upgrades/add-ons, and certain other add'l fees & chrgs. See [directv.com/directv-fees/](https://directv.com/directv-fees/) for additional information. **\$10/mo. Autopay and Paperless Bill Discount:** Must enroll in autopay & paperless bill within 30 days of TV activation to receive bill credit starting in 1-3 bill cycles (pay \$10 more/mo. until discount begins). Must maintain autopay/paperless bill and valid email address to continue credits. **DIRECTV Svc Terms: Subject to Equipment Lease & Customer Agreements.** Taxes, surcharges, add-on programming (including premium channels), protection plan, transactional fees, and Federal Cost Recovery Fee are not included in two-year price guarantee. Visit [directv.com/legal/](https://directv.com/legal/) or call for details. **Access HBO Max through HBO Max app or hbomax.com with your DIRECTV log-in credentials. Visit directv.com to verify/create your account. Use of HBO Max is subject to its own terms and conditions, see hbomax.com/terms-of-use for details. Programming and content subj. to change.** Requires account to stay in good standing. Upon cancellation of your video service you may lose access to HBO Max. If you cancel your service, you will no longer be eligible ofr this offer. Limits: Access to one HBO Max account per DIRECTV account holder. May not be stackable w/other offers, credits or discounts. To learn more, visit [directv.com/hbomax](https://directv.com/hbomax). HBO MAX is used under license. Cinemax and related channels and service marks are the property of Home Box Office, Inc. Separate SHOWTIME subscription required. SHOWTIME is a registered trademark of Showtime Networks Inc., a Paramount Company. All rights reserved. Starz and related channels and service marks are the property of Starz Entertainment, LLC. Visit [starz.com](https://starz.com) for airdates/times. MGM+ is a registered trademark of MGM+ Entertainment LLC. ©2023 DIRECTV. DIRECTV and all other DIRECTV marks are trademarks of DIRECTV, LLC. All other marks are the property of their respective owners.